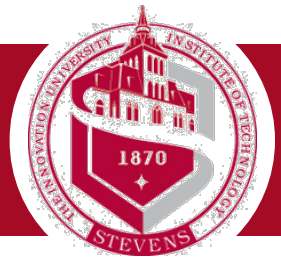
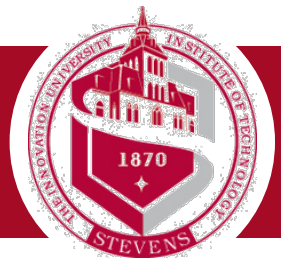




# Stevens AIChE



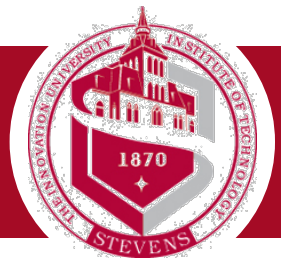
GBM 10/11/17



# Event Schedule



Event	Date	Time	Location
ExxonMobil Info Session	Sept 12	5pm	Bissinger
Additional Exxon Networking Event	Sept 13	9pm	X004
Intro to ChemE Seminar	Sept 20	Noon	E230
Welcome Back BBQ	Sept 20	Noon	EAS Lawn
GBM2	Oct 11	9pm	X004
Bayway Chemical Plant Tour	TBD	TBD	Linden, NJ
Mole-o-ween w/ ACS	Oct 24	7-9pm	Hayden Lounge
National Conference	Oct 27-30	All Day	Minneapolis
GBM3	Nov 15	9pm	X004
Thermite Hot Chocolate	Nov 22	3pm	MPK Lawn
GBM4	Dec 13	9pm	X004

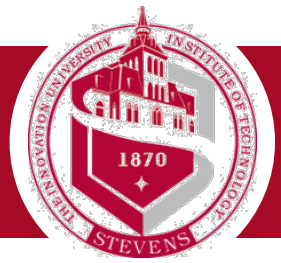


# Societe Mentor Program



- New program (started last semester)
- Connects Stevens students with Societe mentors to **foster career development and guidance**
- Minimum requirement: **1hr phone call** with mentor
- Any additional interaction is at the discretion of the mentor/mentee
- **Deadline for application: Oct 15<sup>th</sup>**
- Application will be sent out in GBM follow-up



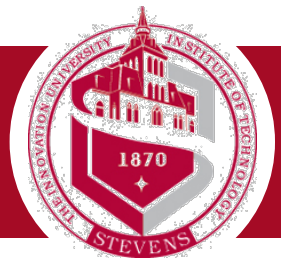


# Additional Societe Stuff



- Received a internship posting from James Weatherall
  - Company is **Covestro** in **Pittsburgh**
  - Coatings, adhesives, plastics
  - Three different positions: R&D, Process Research, Product Safety and Regulatory
  - Open to all who have **completed freshman year** and have a **3.0**
  - Will be posted in GBM Meeting follow-up email

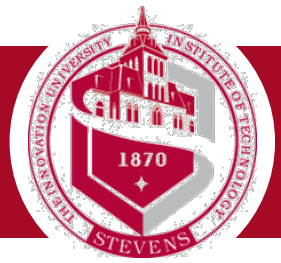




# Additional Opportunity



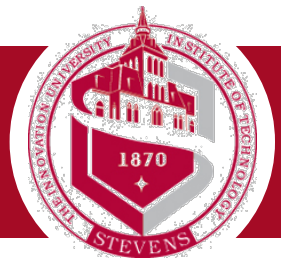
- Magnolia Innovation
  - Located *IN HOBOKEN*
  - Primarily a marketing internship
  - 1 current Stevens ChemE working there
  - Deets will be sent out in GBM follow-up
  - Junior or senior preferred



# National Conference



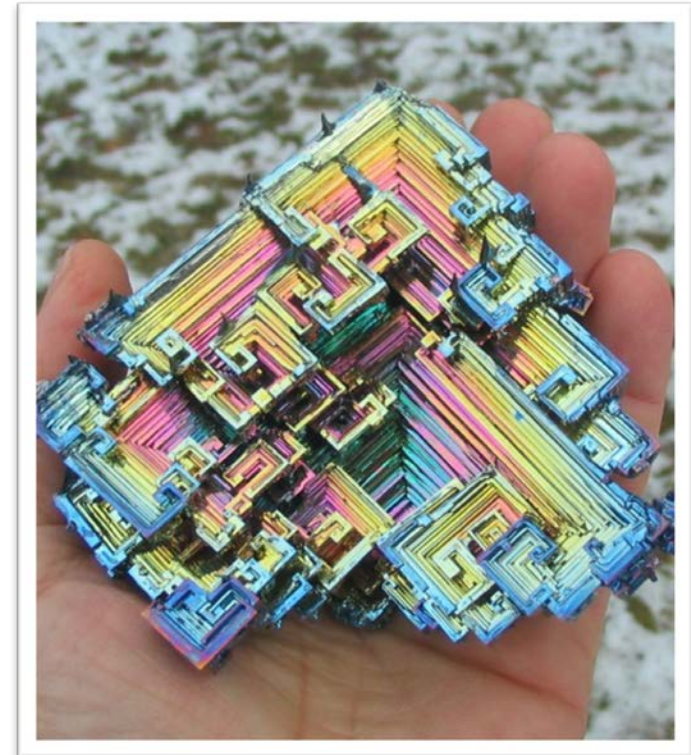
- Sending 3 students
  - Matt Mayer
  - Mike Delaney
  - TJ Carlson
- All presenting research
- Good luck!



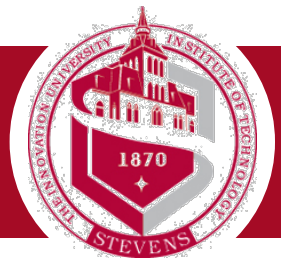
# Mole-o-ween with ACS



- ACS Activities
  - Dry ice crystal ball
  - Growing SpOoKy bismuth crystals
  - Playing with magnetic slime
- AIChE Activities
  - Making candy apples
  - Making chocolate lollipops
  - Sugar coating using a fluidized bed







# Mole-o-ween with ACS

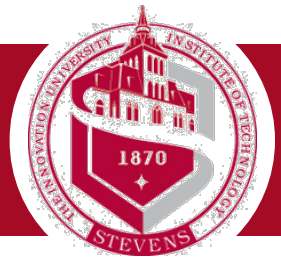


- Additional food will be served
  - Spooky dry ice punch
- We are looking for more ChemE activity ideas
  - Preferably candy related
  - All ideas welcome

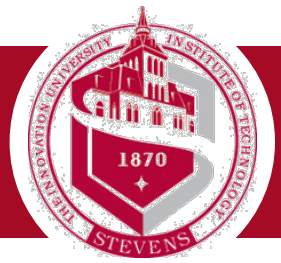




# GBM II



ChemE Car Update



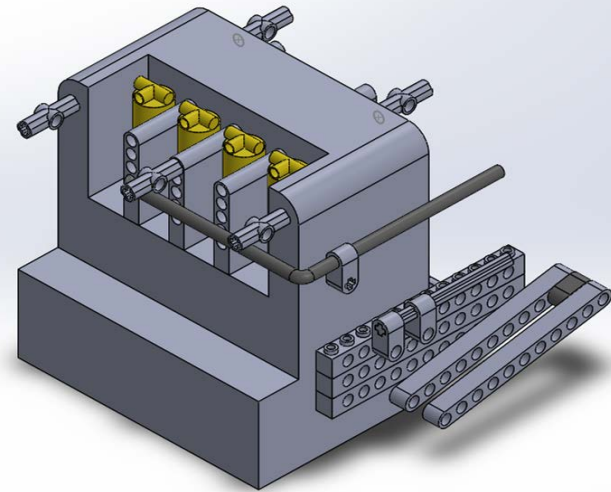
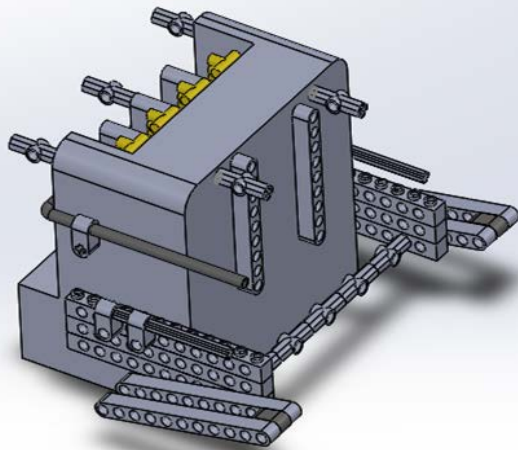
# Accomplishments



- Established name of the car
- Established a power reaction
- Established the timing reaction
- Run basic tests on power reaction
- Created a prototype chassis
- Obtained some components
- Identified the majority of components to be purchased
- Created Solidworks models



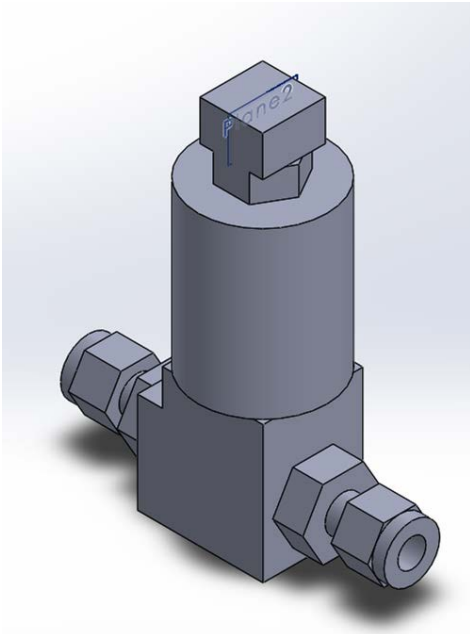
# Models



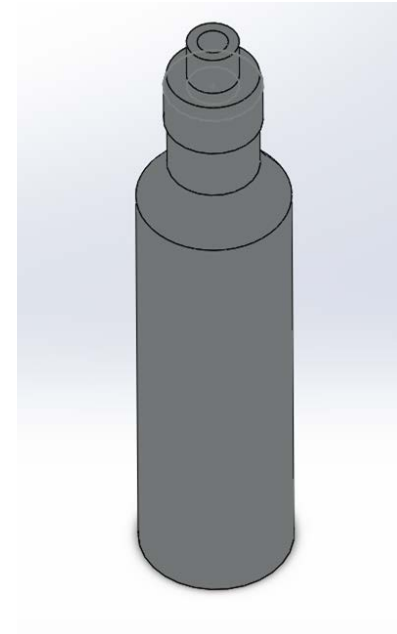
By: Angel Bugos



# Models



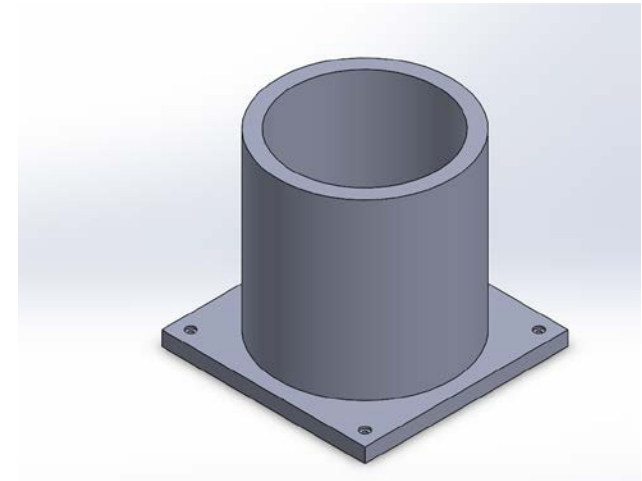
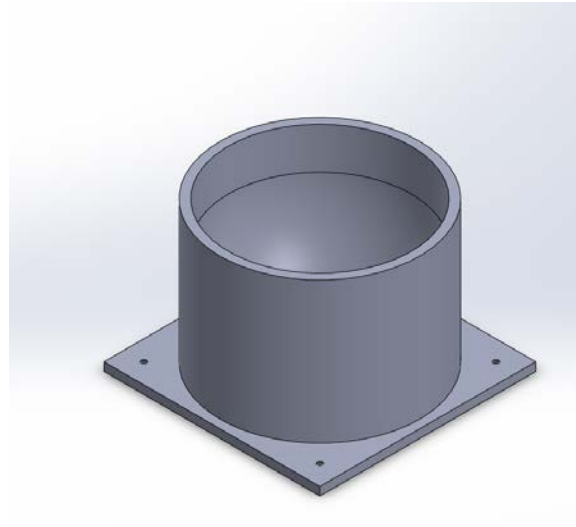
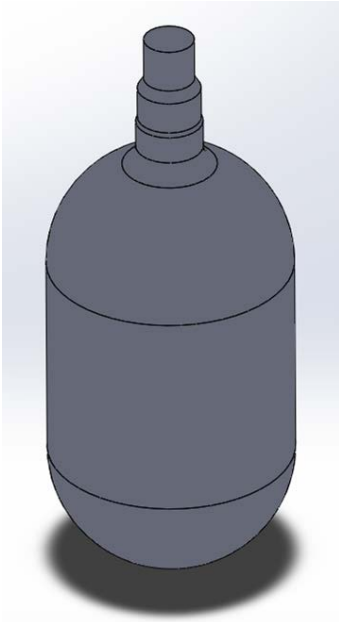
By: Michael Devita



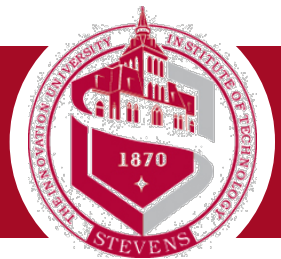
By: Dylan Skurnik



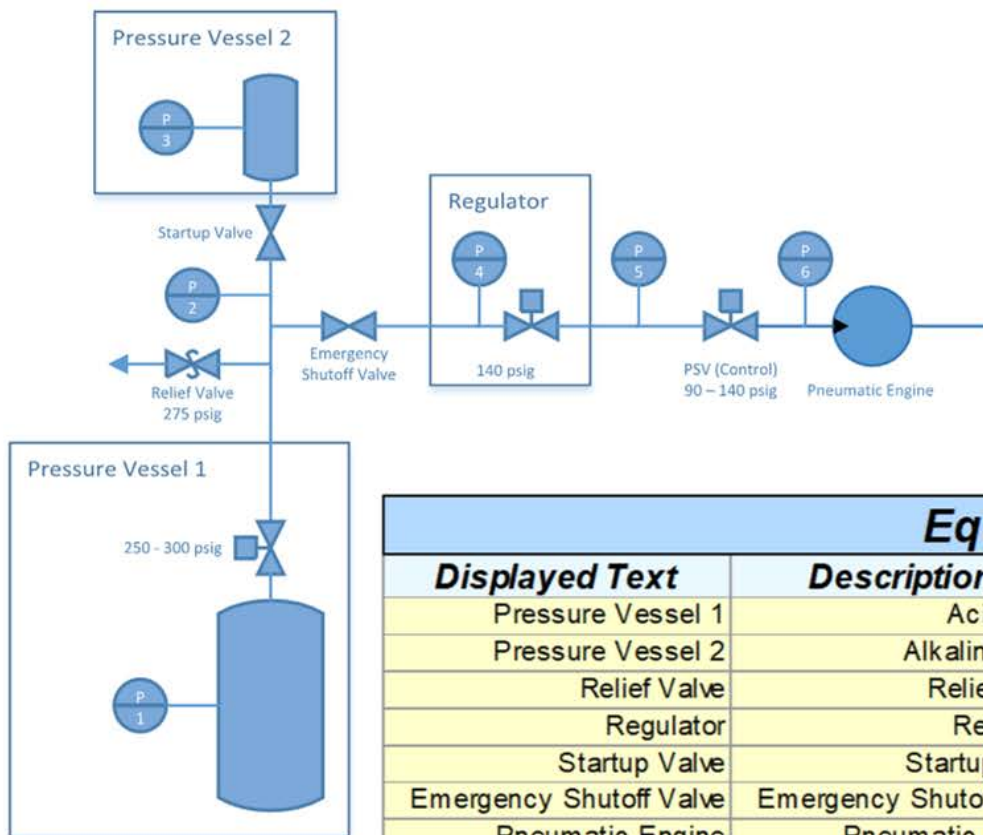
# Models



By: Angel Burgos and Ryan Delipsingh

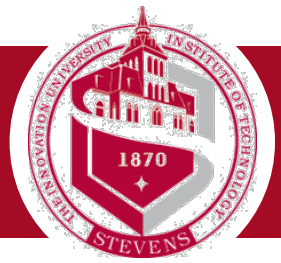


# Progress

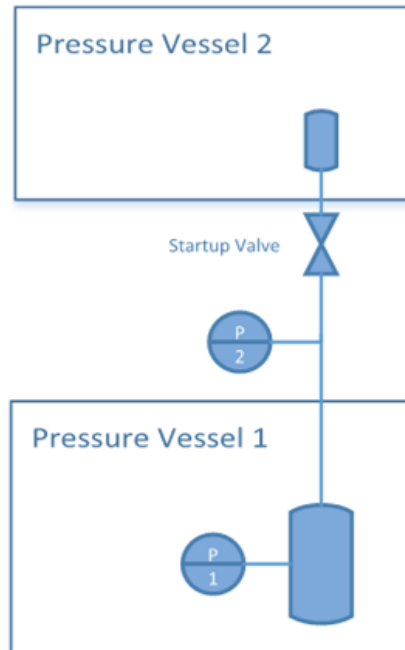


<b>Equipment List</b>				
<b>Displayed Text</b>	<b>Description</b>	<b>Manufacturer</b>	<b>Material</b>	<b>Rated Pressure</b>
Pressure Vessel 1	Acid Tank	Guerilla	Aluminum	4500 psig
Pressure Vessel 2	Alkaline Tank	Guerilla	Aluminum	4500 psig
Relief Valve	Relief Valve	?	?	275 psig
Regulator	Regulator	Palmer's Pursuit	?	250 psig to 140 psig
Startup Valve	Startup Valve	?	?	> 250 psig
Emergency Shutoff Valve	Emergency Shutoff Valve	?	?	> 250 psig
Pneumatic Engine	Pneumatic Engine	LPE Power	Lego	140 psig
PSV (Control)	Proportionating Valve	Dakota Instruments	SS	500 psig
P2	Reactant Indicator	?	?	0 - 500 psig
P5	Control Inlet Indicator	?	?	0 - 280 psig
P6	Engine Inlet Indicator	?	?	0 - 280 psig



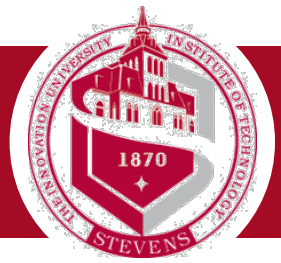


# Progress



<b>Equipment List</b>				
<b>Displayed Text</b>	<b>Description</b>	<b>Manufacturer</b>	<b>Material</b>	<b>Rated Pressure</b>
Pressure Vessel 1	Peroxide Tank	Guerilla	Aluminum	4500 psig
Pressure Vessel 2	Iodide Tank	?	?	1 psig
Startup Valve	Startup Valve	?	?	1 psig
P2	Pressure Transducer	?	?	0 - 1 psig

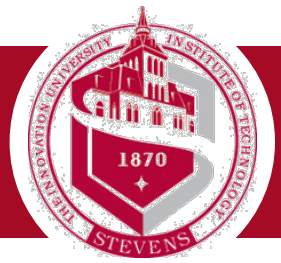




# To Do



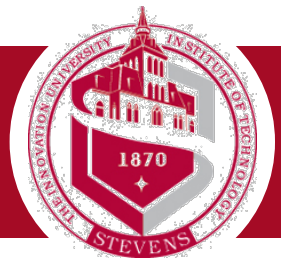
- **October:**
  - Create Solidworks models for all car components
  - Design the chassis
  - Obtain all components for the car
  - Storyboard the Introduction Video
- **November & December:**
  - Build the car
  - Run tests on timing reaction
  - Run tests on power system
  - Finish Engineering Documentation Package



# Meetings



- In Mclean 004
  - Tuesdays: 8-10pm
  - Saturdays: 5-7pm
  - Sundays: 4-6pm

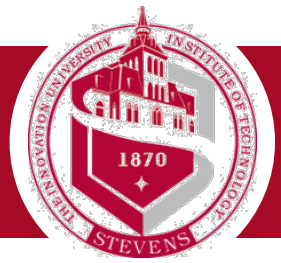


# Rocket Project Update



- Progress is... slow.
- 1 batch of r-candy made to test out process
- Still working on getting permission from EHS and faculty to use Stevens facilities

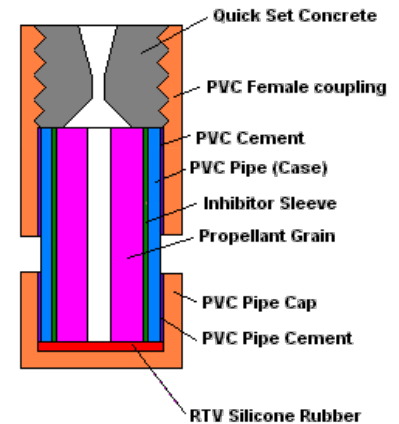
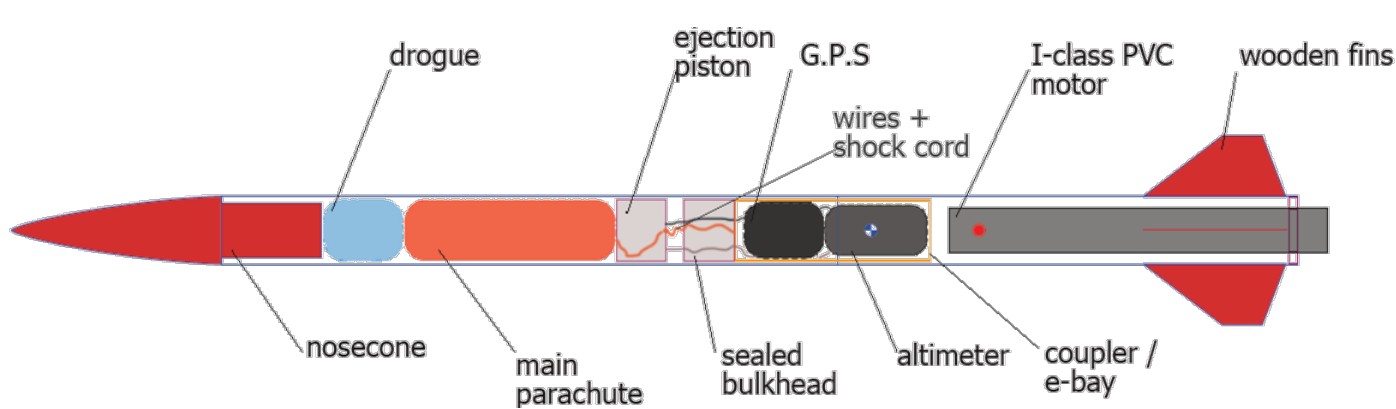


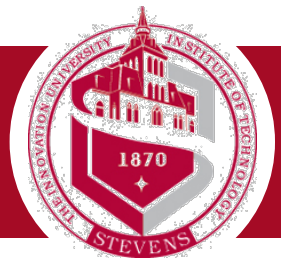


# Rocket Project Update



- Project will begin after other AIAA projects
- Kick-off meeting tentatively scheduled  
– Oct 25, 1pm

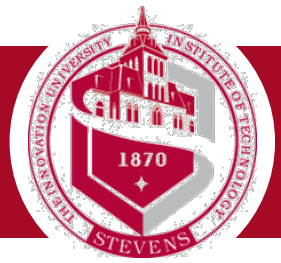




# Industry Tour Update



- Not yet scheduled
- Infineum plant representative totally nonresponsive
- Currently looking into alternatives
  - Coop students, if your jobsite would make a good candidate, give us those digits



# Pamphlet update



- Our 'give us money' pamphlet is complete
- Printing to commence 'soonish'

## MORE ABOUT STEVENS

Stevens Institute of Technology was founded in 1870 and is a premier, private research university situated in Hoboken, New Jersey. Today, 6,600 undergraduate and graduate students collaborate with faculty members in an interdisciplinary, student-centric, entrepreneurial environment. A range of academic and research programming spanning business, computing, engineering, and other fields actively advance the frontiers of science and leverages technology to confront our most pressing global challenges (excerpts from the Stevens Institute of Technology website).

Of the 20 2016 Stevens chemical engineering graduates, 92% found themselves employed or headed to graduate school or the military.



## QUESTIONS?

Contact AIChE  
1 Castle Point Terrace  
Hoboken, NJ  
07030  
aiche@stevens.edu

AIChE  
STEVENS INSTITUTE  
OF TECHNOLOGY

## INTRODUCTION

The Stevens Institute of Technology chapter of the American Institute of Chemical Engineers is the university's professional society for Chemical Engineers. We provide social and professional opportunities for undergraduates.



## WHO WE ARE

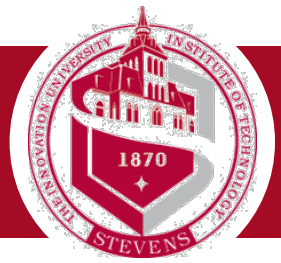
AIChE is the world's leading organization for chemical engineering professionals with more than 50,000 members. As a member, Chemical Engineers can access information on recognized and promising chemical engineering processes and methods, connect with a global network of colleagues, and find learning opportunities. AIChE's vision is to provide value as the global leader of the profession, the lifetime center for professional and personal growth, and security of chemical engineers, and the foremost catalyst in applying chemical engineering expertise in meeting societal needs (excerpts from the AIChE website). The Stevens AIChE chapter is accredited by the national organization.

## WHY YOU SHOULD GIVE



Each year, AIChE sponsors programs to share chemical engineering with the undergraduate student body, apply chemical engineering knowledge to student-led projects, and interact with professionals in industry. Donations and sponsorship allow us to increase the number and scope of our contributions to the chemical engineering program at Stevens in such ways as sending more students to AIChE conferences and increasing the budget for engineering projects.





# Pamphlet update



## INTRODUCTION

The Stevens Institute of Technology chapter of the American Institute of Chemical Engineers is the university's professional society for Chemical Engineers. We provide **social and professional opportunities for undergraduates.**



## WHO WE ARE

AIChE is the **world's leading organization for chemical engineering professionals**, with more than 50,000 members. As a member, Chemical Engineers can access information on recognized and promising chemical engineering processes and methods, connect with a global network of colleagues, and find learning opportunities. **AIChE's vision is to provide value as the global leader of the profession**, the lifetime center for professional and personal growth, and security of chemical engineers, and the foremost catalyst in applying chemical engineering expertise in meeting societal needs (excerpts from the AIChE website). The Stevens AIChE chapter is **accredited by the national organization.**

## WHY YOU SHOULD GIVE

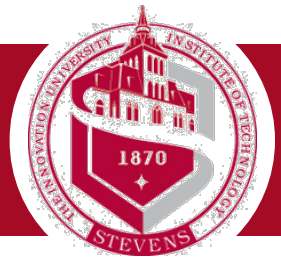


Each year, AIChE sponsors programs to share chemical engineering with the undergraduate student body, apply chemical engineering knowledge to student-led projects, and interact with professionals in industry. **Donations and sponsorship allow us to increase the number and scope of our contributions to the chemical engineering program at Stevens** in such ways as sending more students to AIChE conferences and increasing the budget for engineering projects.

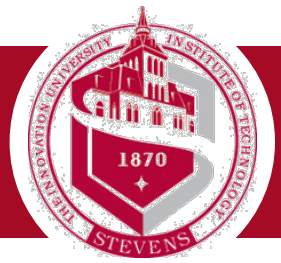




# GBM II



Guest Speaker: Luke Malvey

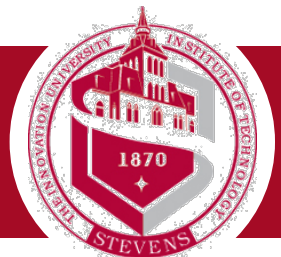


# Next Semester



- Spring '17 budgets are due at the end of this month!
- A google form will be going out asking you guys what *you* want from the chapter next semester
- If you have any ideas for events, projects, or speakers, make sure you fill it out!





# Next GBM



Event	Date	Time	Location
ExxonMobil Info Session	Sept 12	5pm	Bissinger
Additional Exxon Networking Event	Sept 13	9pm	X004
Intro to ChemE Seminar	Sept 20	Noon	E230
Welcome Back BBQ	Sept 20	Noon	EAS Lawn
GBM2	Oct 11	9pm	X004
Bayway Chemical Plant Tour	TBD	TBD	Linden, NJ
Mole-o-ween w/ ACS	Oct 24	7-9pm	Hayden Lounge
Rocket Project Kickoff	Oct 25	1pm	TBD
National Conference	Oct 27-30	All Day	Minneapolis
<b>GBM3</b>	<b>Nov 15</b>	<b>9pm</b>	<b>X004</b>
Thermite Hot Chocolate	Nov 22	3pm	MPK Lawn
GBM4	Dec 13	9pm	X004