

An aerial night view of a city with a prominent mountain in the background. The city lights are visible, and the mountain has a few structures on top. The text is overlaid on a semi-transparent white rounded rectangle.

KSA GBM #1
January 22, 2018

KSA Spring Events



- **Lunar New Year**

- **January 31st**
- **9:00 pm @ Bissinger**
- **Volunteers needed!**

● **Holidays of Love**

- **February 21st**
- **9:00 pm @ Babbio Atrium**
- **Volunteers Needed!**

- 
- **K-pop Dance Night**
 - Teachers and dance suggestions needed

WATCH ON DRAMA FEVER

DON'T WALK. RUN!

RUNNING MAN

- **Running Man**

- **April 4th**

- **1:00 pm @ Walker Lawn**





- **Family Celebration**

- **April 25th**

- **9PM @ Jacobus**




KSA Unity

Stevens

Unity 2018: “Speak My Language”

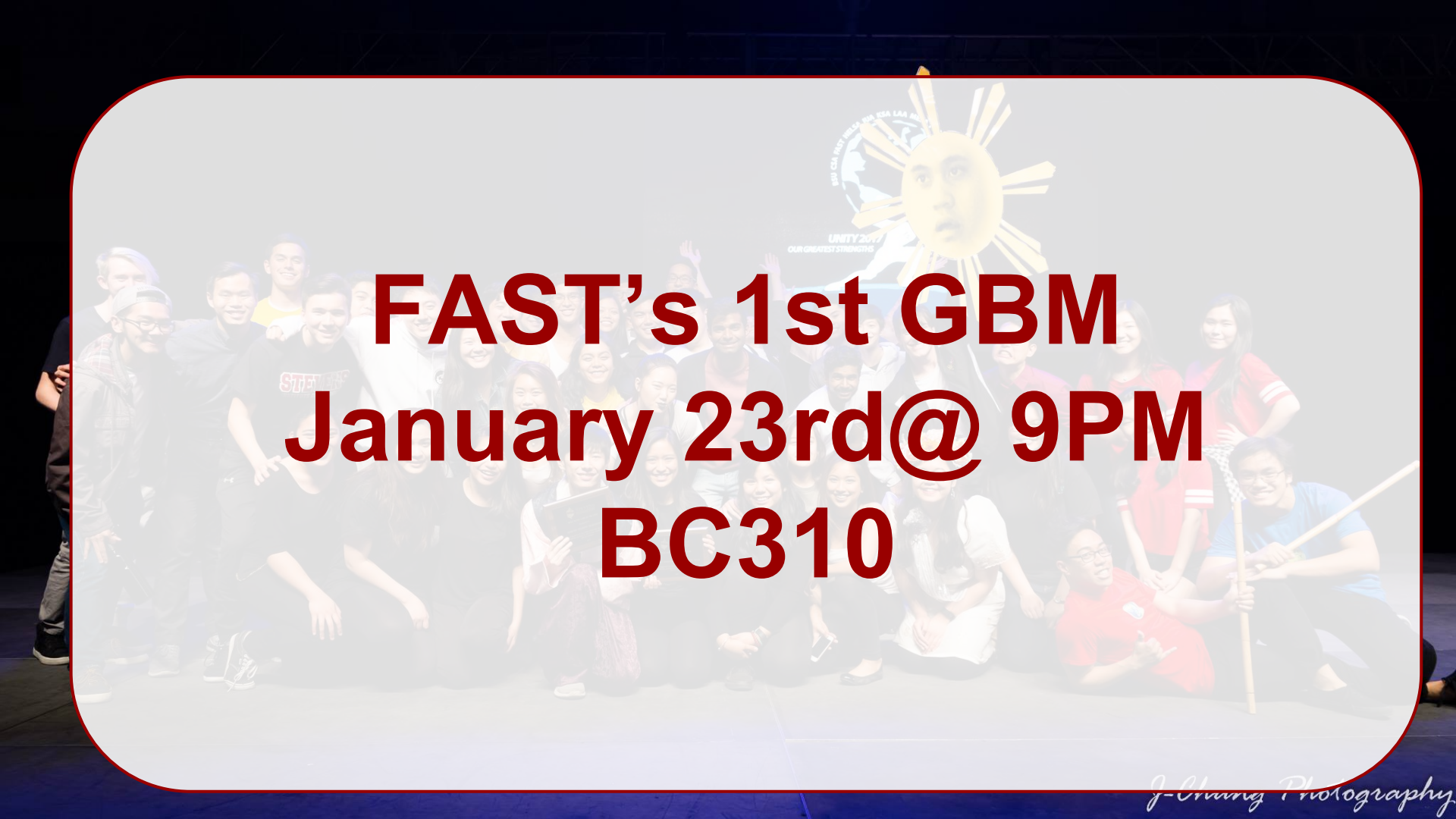
- **Looking for: actors, dancers, script writers, voice actors, props, crew, hype ppl, anyone with a pulse**



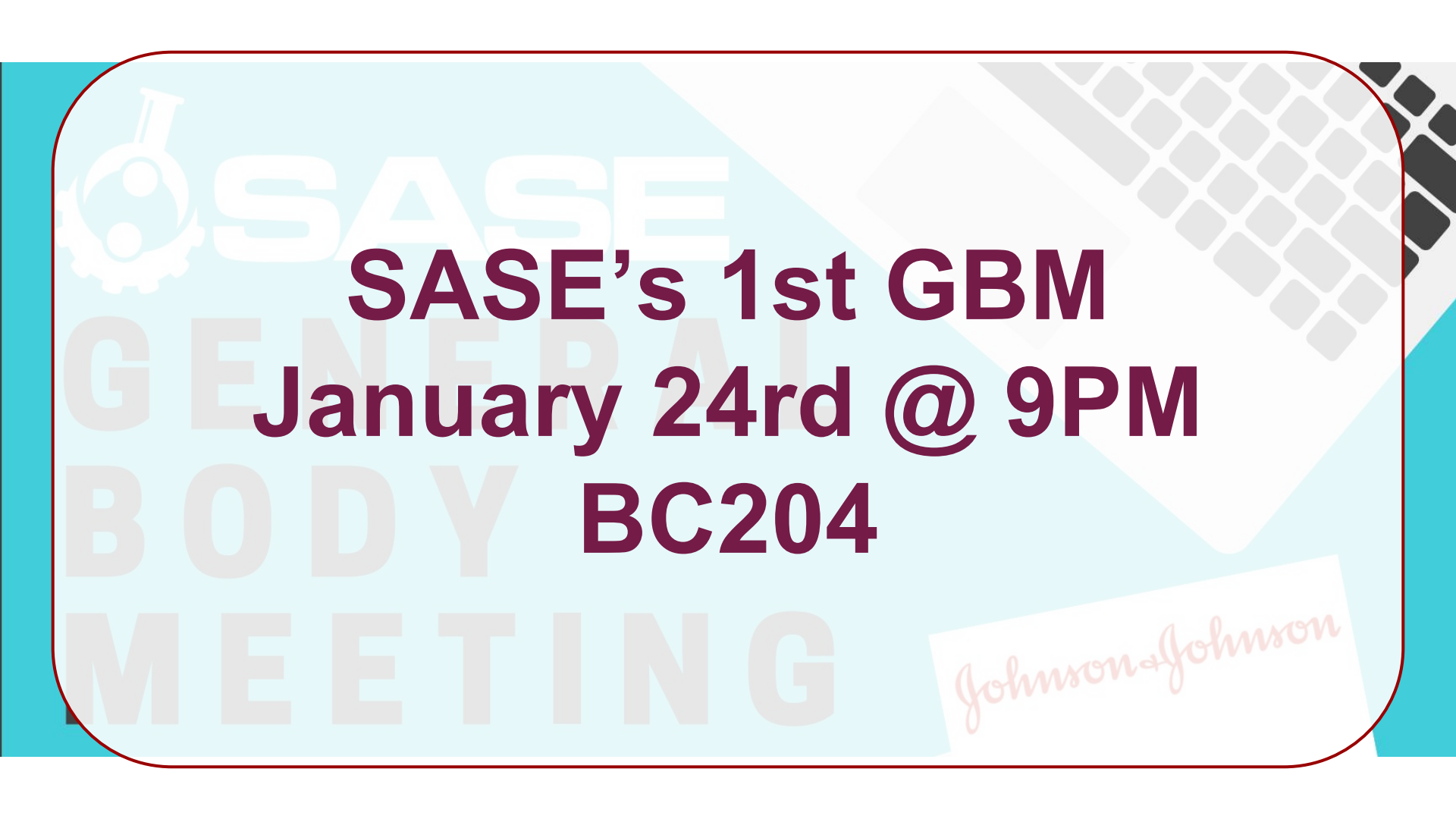
**Other
Announcements**

The background of the slide is a panoramic view of a city skyline, likely New York City, featuring numerous skyscrapers and a body of water in the foreground. The text is centered over this background.

Stevens Events



FAST's 1st GBM
January 23rd @ 9PM
BC310



SASE's 1st GBM
January 24rd @ 9PM
BC204

Johnson & Johnson

SASE STEVENS PRESENTS

EMPOWER

YOU TO



Westin, Jersey City

February 10, 2018

REGISTER NOW

Link in description

INNOVATE

SASE Northeast Regional Conference 2018

Questions or concerns? Contact us at sase@stevens.edu



A photograph of four men sitting on a stone bench, dressed in various styles of suits and jackets. The man on the far left wears a grey tweed suit and glasses. The second man wears a dark grey suit and glasses. The third man wears a blue and white striped pinstriped suit and sunglasses. The man on the far right wears a blue and white plaid blazer over a white shirt and blue jeans, with red loafers and sunglasses. The background is a blurred outdoor setting with stone steps and a building.

Culture Time!

TOPIC: PESSION

With Trent and David

This is it



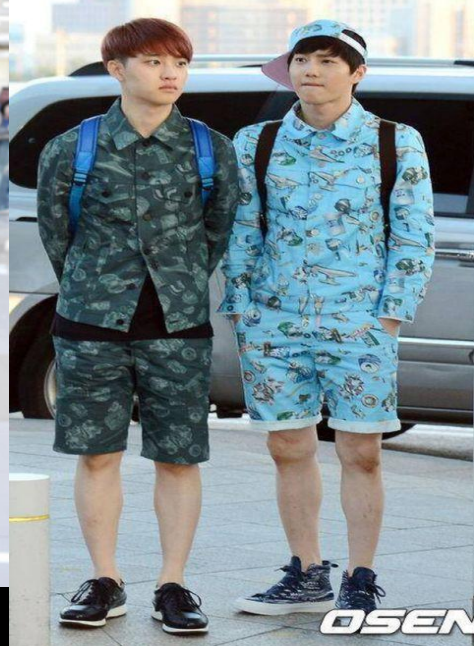
GENERAL FASHION

- It's trending to wear neutral colors
- Guys wear makeup too
 - To boost self-confidence
 - Men are wearing makeup because of the country's rocky economy and job market.
 - Good for interviews
- Masks
 - First worn to prevent illnesses and from bad air
 - Avoid communication
 - Mysterious look
 - They just had no makeup on
 - Hide emotions
 - Others were even convinced that it made their faces look smaller

Men Fashion: Idol Style

Five Tips for Rocking the Idol Style

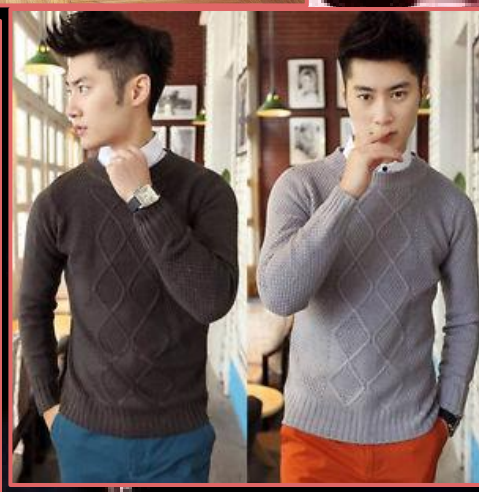
- 1. Mismatched outfits.** The idol style is about wearing outfits that you wouldn't expect to look good together. Think sports jacket with a chiffon skirt. Or, a [graphic tee](#) combined with an office blazer. It's pretty unusual, but it works for Korean idols.
- 2. Color Wheel.** The idol style is all about an explosion of color, but not random colors. To stay in style, consult a color wheel and match the ones with the same base color. For instance, blue-green and blue-violet look great together since their base color is blue.
- 3. Pop-Art Prints.** Wear ensembles with pop-art prints from top to bottom. When it comes to color, the brighter the better!
- 4. Texture.** Most idols have athletic bodies, but that doesn't mean they flaunt it with **skin tight leggings** and tight **crop tops** all the time. When it comes to idol style, you can get away with looser outfits. Imagine a crop top with ultra wide-leg trousers that comes with pop-art prints.
- 5. Confidence.** If you want to look like your favorite idol, then you have to act like an idol. Don't care about what other people think, and just own it.



“Casual” does not mean “dress down”

In the world of stylish men, the term “casual” doesn’t mean an absence of creativity or style, it means tuning your good taste in clothing to the occasion. This means you look damn good, no matter what you’re doing.

1. Keep fittings right
2. Keep it simple and casual BUT ALSO stylish
 - a. Aka: don’t make it boring, add something small to own that outfit
3. Korean Designer-wear
 - a. Brands: Blindness, Ordinary People, Heich Es Heich





Female Fashion



A young girl with pigtails, wearing a pink polo shirt, a yellow visor, and sunglasses, is riding a white pony. An adult in a light blue shirt is assisting her from the side. The background is a blurred outdoor setting.

Female Street Fashion

- What is the new trend and what is socially acceptable
- More conservative
- Usually follow these rules
 - Elevated Basics
 - Pants that show off shoes
 - Focus on one detail
 - Layering
 - Jackets
 - Show off your legs

Trends

- Excessive hats
- Colorful and patterned
- Oversized clothes
- Cute (character shirts)
- Wire framed glasses
- Adidas



Traditional



Names of Women's Hanbok



- **Jeogori**
The jeogori makes up the upper part of the hanbok. Men's jeogori is larger and simplistic while a woman's jeogori is rather short and characterized by curved lines and delicate decorations.
- **Dongjeong**
The dongjeong refers to a white collar attached along the rim of the neckline. It contrasts and harmonizes with the overall curve of the neck.
- **Otgoreum (Cloth Strings)**
The otgoreum is a women's ornamental piece, which hangs vertically across the front of the chima (women's skirt).
- **Baerae (Jeogori Sleeve)**
The baerae refers to the lower lines of the sleeve of either the jeogori (traditional jacket), or the magoja (outer jacket). It features a circular line which is naturally curved, similar to the line of the eaves of the traditional Korean house.
- **Chima**
The chima is the women's outer skirt. There are different kinds of chima: single-layered, double-layered, and quilted. Pul-chima refers to a chima with a separated back, whereas a tong-chima has a seamed back.
- **Patterns**
Traditional patterns graceful lines and color combinations enhance the beauty of the hanbok. Plant, animal, or other natural patterns are added to the rim of the skirt, the areas surrounding the outer collar shoulders.

- Beoseon

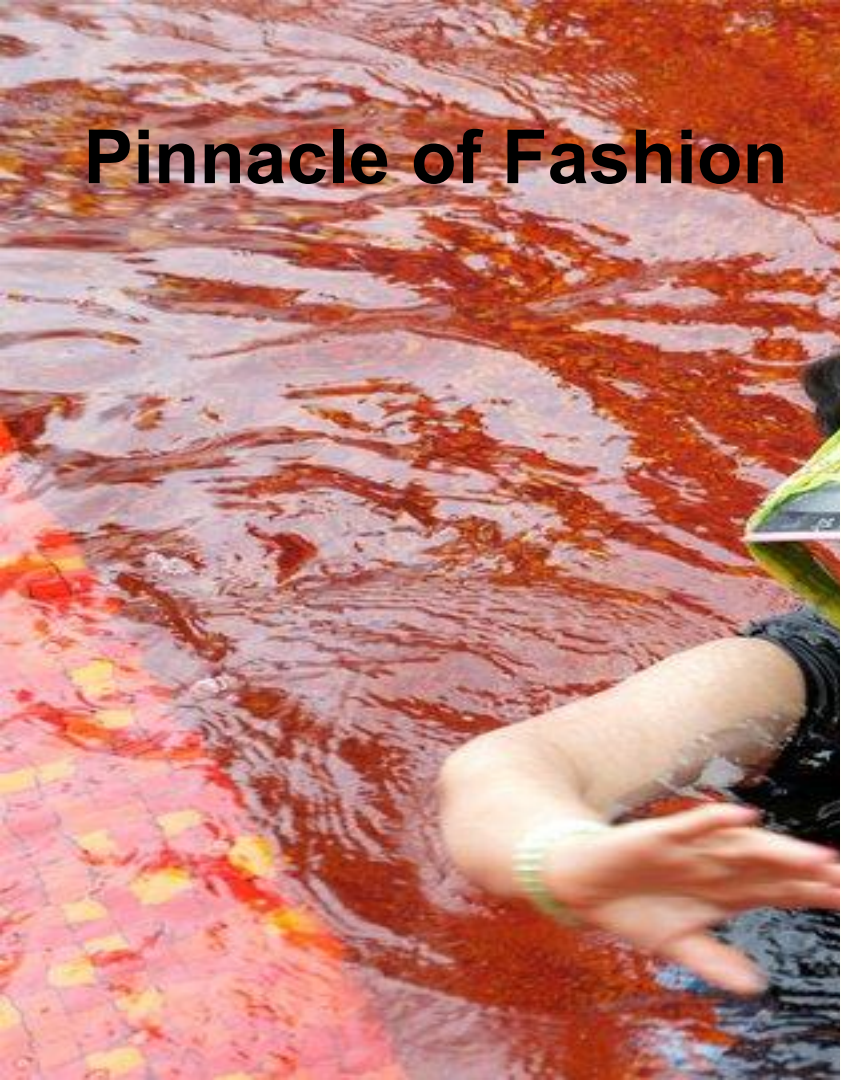
The beoseon corresponds to a pair of contemporary socks. Although the shape of the beoseon does not reflect any difference in the gender of its users, men's beoseon are characterized by a straight seam.



Over the Years



Pinnacle of Fashion



The AJUMMA STARTER GUIDE

THE ALL-DAY VISOR

Real purpose unknown

THE PERM

Just ask for the "Ajumma Special"

THE PUFFER JACKET

Available in purple & pink

SHARPENED ELBOWS

All the better to jab you with

THE FLORAL SLACKS

Keep the cold days sunny

THE SHOPPING CART

These make so much sense!



© Amy Statton